



## Product : Sewage treatment plant

Type : Oxyfix® FIXEUC90  
 Model : C-90 MB 9 PE (2)  
 Process : Submerged Aerated Fixed Film (SAFF) Technology

### PERFORMANCE

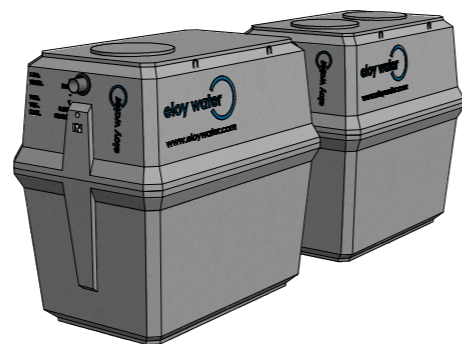
#### Assumed Influent Values

Application :	Wastewater Treatment*	
Pollutant load BOD <sub>5</sub> :	0.54	kg O <sub>2</sub> /day
Pollutant load COD :	1.22	kg O <sub>2</sub> /day
Pollutant load TSS :	0.81	kg/day
Hydraulic load :	1.35	m <sup>3</sup> /day

#### Purification performance

BOD <sub>5</sub> :	< 25	mg O <sub>2</sub> /liter
COD :	< 125	mg O <sub>2</sub> /liter
TSS :	< 30	mg/liter

\* We recommend placing a grease trap for treating waste water generated by a restaurant, kitchens used for commercial purposes, etc.



Sewage treatment / Oxyfix® C-90 MB 9 PE (2)

Sewage treatment / Oxyfix® C-90 MB 9 PE (2)

### DIMENSIONS | VOLUMES | WEIGHTS

Measure	Unit	Tank 1	Tank 2
Total height* :	(cm)	225	225
Entry height* :	(cm)	200	200
Exit height* :	(cm)	198	198
Length :	(cm)	238	238
Width :	(cm)	158	158
Total volume :	(m <sup>3</sup> )	6.00	6.00
Useful volume :	(m <sup>3</sup> )	5.20	5.20
Weight :	(T)	2.75	3.33
Weight (w/o shipping cover):	(T)	2.73	3.28
Manhole(s) :	(cm)	1 x Ø60	2 x Ø60
Ø In / Out :	(mm)	110/110	110/110

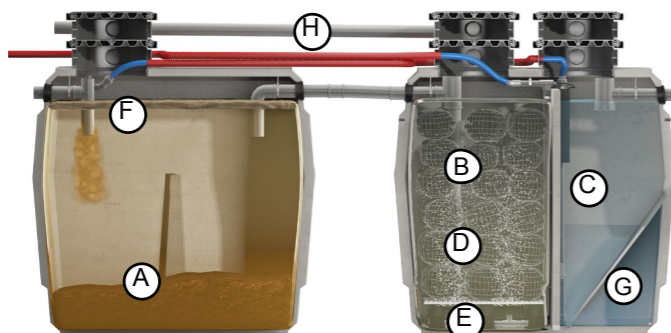
\* tolerance ± 2 cm

#### Material

Tank(s):	High performance steel reinforced concrete
Biocarrier:	Recycled PP
Air feed pipes:	PVC PN16



### FEATURES



### ELECTROMECHANICAL COMPONENTS

#### Blower

Quantity :	1	pc(s)
Type :	diaphragm blower	
Installed power :	0.09 - 0.10	kW
Power consumption :	0.072	kW
SPL (Sound Performance Lab) :	≤ 42	dB(A)
On / Off :	60/00	min.
Voltage :	1x230V	

#### Air Diffusers

Quantity :	4	pc(s)
Type :	fine bubbles	

#### Sludge recirculation

Type :	airlift	
Installed power :	-	kW
Power consumption :	-	kW
On / Off :	-	min.

#### Control panel

Type :	(option)
--------	----------

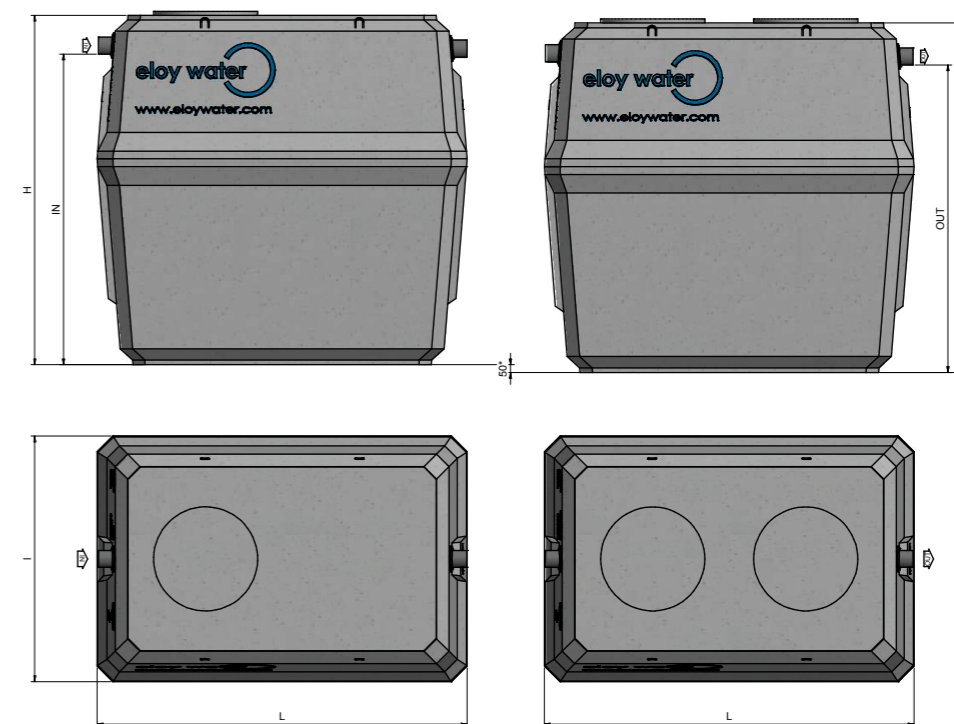
#### Legend

A	Primary settling compartment
B	Biological reactor
C	Secondary settling compartment
D	Bacterial support
E	Diffusers
F	Sludge recirculation
G	Settling cone
H	Ventilation

### APPROVALS AND CERTIFICATES

W	: 2014/04/136/A
CE	: EN 12566-3 CPD 89/106/CEE

### TANK DIMENSIONS



### OPERATION

#### Useful volumes/surfaces

Primary settling compartment:	5.20	m <sup>3</sup>
Biological reactor:	2.92	m <sup>3</sup>
Clarifier:	1.08	m <sup>2</sup>

#### Operation

Sampling chamber:	integrated
Theoretical desludging frequency:	every 40 months
Approximate energy consumption:	832.20 kW
Maintenance frequency :	annually (recommended)
Admissible load :	80 cm of fill + pedestrian load

#### Consumables

Blower filter:	annually
Blower membranes:	every 2 years
Air diffusers:	every 8 years

### OPTIONS

Wall support for blower	
PE/concrete tank cover riser	3 pcs
PE/steel tank cover	3 pcs

### GUARANTEES

Electromechanical kit :	2+1 years
Tanks :	10+5 years
Resistance :	B125